

Q-SPECIALS

4th Quarter 2023



01 PRObas POWER SUPPLY



High performance, compact design and a good price-performance ratio are the main characteristics of the new PRObas power supplies. The product family comprises 12 variants with 5, 12, 24 or 48 V DC output voltage and a wide-range input. All units have comprehensive safety functions and are internationally approved. Due to compatibility with our electronic fuses, DC UPS and diode modules, they are also suitable for setting up power management systems.

- ✓ Compact design with flexible mounting (DIN rail or wall)
- ✓ High efficiency up to 95%
- ✓ Operates in a wide temperature range from - 25°C to 70°C
- ✓ International approvals (cULus, NEC Class2 and cCSAus)

2838460000	PRO BAS 240W 24V 10A	Reg. \$ 180.63 \$ 79.00
2838440000	PRO BAS 120W 24V 5A	Reg. \$ 117.02 \$ 51.00



02 INSTA-POWER POWER SUPPLY



The single-phase INSTA-POWER switched mode power supplies are characterized by a small depth, a compact design and a good price-performance ratio. They are suitable for temperature ranges from -25 °C to +70 °C, have international approvals and a wide range voltage input. This makes them suitable for a wide range of applications. This also includes signal and telecommunication systems as well as automation systems with low power requirements up to 96 watts.

- ✓ Extremely compact and particularly energy-efficient
- ✓ Universally applicable thanks to international approvals (cCSAus (UL508), Cl. 1, Div. 2, and NEC Class 2 until 90W)
- ✓ Fast installation with PUSH IN connection technology

2580230000	PRO INSTA 60W 24V 2.5A	Reg. \$ 64.79 \$ 36.00
2580240000	PRO INSTA 60W 12V 5A	Reg. \$ 64.81 \$ 45.00

Q-SPECIALS

4th Quarter 2023



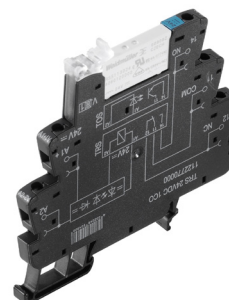
03 PROmax POWER SUPPLY



The powerful switched mode power supplies of the PROmax series are designed for demanding mechanical engineering applications. They show their strengths in plant engineering, in the food and beverage industry, in automotive engineering and even in plants of the process industry. Permanent overloads up to 20% of nominal current at 45 °C or short-term peak loads until 300% of nominal current are easily absorbed by PROmax. Thanks to their small overall width, they also fit into limited space conditions. A wide range of approvals make PROmax suitable for worldwide use.

- High load capacity with constant output powers up to 120% at temperatures up to + 45 °C and high output peaks up to 300%
- Universally applicable with variants from 3 A to 40 A output current and output voltages from 5 V DC to 48 V DC

1478140000	PRO MAX 480W 24V 20A	Reg. \$ 513.34 \$ 289.00
1478130000	PRO MAX 240W 24V 10A	Reg. \$ 326.94 \$ 184.00
1478110000	PRO MAX 120W 24V 5A	Reg. \$ 192.56 \$ 84.00



04 TERMSERIES



Modular relay modules from 6.4 mm width with extensive accessories, large selection of variants, and unlimited cross-connection possibilities. Relay modules from the TERM SERIES are now also available with a test button and offer a high level of practical benefit.

- 1 and 2 CO contacts, 1 NO contact
- Unique multi-voltage input from 24 to 230 V UC
- Input voltages from 5 V DC to 230 V UC with coloured marking: AC: red, DC: blue, UC: white
- Optional: Test button
- Hazardous area versions available CIDR

1122770000	TRS 24VDC 1CO	Reg. \$ 15.59 \$ 9.00
1984570000	TRS 24VDC 1CO C1D2	Reg. \$ 21.09 \$ 11.00
1122850000	TRS 24-230VUC 1CO	Reg. \$ 34.29 \$ 21.00
1479680000	TRS 24VDC 1CO 16A	Reg. \$ 23.92 \$ 12.00
1984610000	TRS 24-230VUC 1CO C1D2	Reg. \$ 43.02 \$ 22.00

QUOTATION #Q4-2023:

This number must appear on purchase order to receive special prices. This promotion is valid from Oct. 1 to Dec. 31, 2023 for customers and distributors in Canada only.



05 SAFESERIES



Force Guided Relay modules with positively driven contacts are used for functional safety. these relay extend the contact output of sil rated systems.

- ✓ The SAFESERIES Contact Extension uses relays with forcibly guided contacts in accordance with EN 61810- 3 Type A, making it predestined for signal monitoring in applications for the protection of people and machinery.
- ✓ The SAFESERIES Contact Extension ensures safe feedback to the control level.

2759090000	FSKIT 24VDC 4NO2NC FG LD AGSNO AU	Reg. \$ 62.7 \$ 47.00
2860020000	FSKIT 24VDC 5NO1NC FG LD AGSNO AU	Reg. \$ 62.7 \$ 47.00
2759100000	FSKIT 24VDC 3NO3NC FG LD AGSNO AU	Reg. \$ 62.7 \$ 47.00
2759080000	FSKIT 24VDC 2NO2NC FG LD AGSNO AU	Reg. \$ 57.3 \$ 43.00
2759070000	FSKIT 24VDC 3NO1NC FG LD AGSNO AU	Reg. \$ 57.3 \$ 43.00



06 TFIS-RELAYS



Our TFIS-Relays consists of five different devices covering the most important applications in building and factory automation. Four of these carry out individual functions: clock generator (pause and pulse start), star-delta switch, switch-on delay and off-delay with control input. There is also a multifunctional version with seven different timing functions. The timing functions and time ranges can be easily configured using a rotary switch fitted on the front. All of the devices meet the international standards according to EN 61812 and have UL approval for the North American market

- ✓ Available in installation design and compact industrial design
- ✓ Simple configuration via setting potentiometers and status LED
- ✓ Compliance with international standards according to EN 61812
- ✓ UL approved for the North American market

2697280000	TFIS 24-240VUC 1CO ON	Reg. \$ 77.48 \$ 53.00
------------	-----------------------	----------------------------------



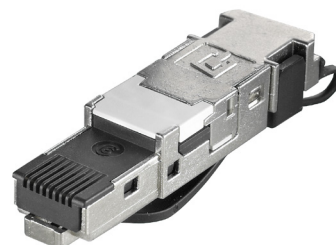
07 ECOLINE UNMANAGED SWITCHES



Unmanaged switches require no configuration and are nevertheless adaptable. They use basic standardised protocols, such as autonegotiation, autocrossing and flow control, allowing them to adapt automatically to widely varying transmission speeds or connector assignments. All switches support the use of twisted pair cabling with RJ45 interface or fibre optic cable based on the interfaces specified in IEEE 802.3.

- ✓ Plug and play switches in an IP30-rated rugged aluminum housing
- ✓ Hazardous area approvals, Class 1, Div 2 and ATEX on some Types.
Wide operating temperature range of -40°C up to 75°C
- ✓ Reliable operation due to redundant voltage inputs, fault relay and LED diagnostics

2682130000	IE-SW-EL05-5TX	Reg. \$ 160.77 \$ 80.00
2682140000	IE-SW-EL08-8TX	Reg. \$ 222.51 \$ 125.00
2682150000	IE-SW-EL16-16TX	Reg. \$ 613.62 \$ 384.00
1241030000	IE-SW-VL16-14TX-2SC	Reg. \$ 1421.5 \$ 977.00



08 RJ45 PLUG-IN CONNECTORS



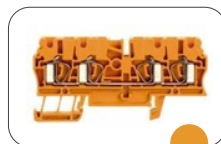
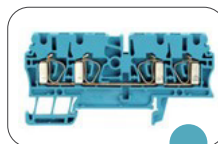
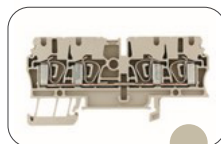
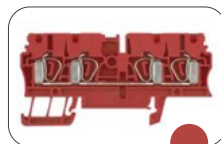
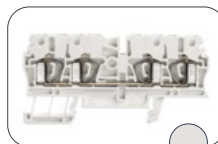
RJ45 plug-in connector (tool-less) according to IEC 60603-7-51 for wire outer diameters up to 1.6 mm

- ✓ Cat. 6A(8 wires)/cat. 5 (4 wires) for PROFINET
- ✓ Multi-port support
- ✓ IP20

1963600000	IE-PS-RJ45-FH-BK	Reg. \$ 35.75 \$ 18.00
------------	------------------	----------------------------------

Prices valid from Oct 1 to Dec 31 2023

- Orders must be received by Weidmuller by this date.
- Orders must be sent to an authorized Weidmuller distributor.
- Orders must reference quotation number Q4-2023.
- Please note that all prices (Regular Price and Special Price) are suggested prices in CAD and valid for customers and distributors in Canada only.
- Image is for illustrative purposes only, please refer to product description.
- We reserve the right to make technical changes.



09 TENSION CLAMP FEED-THROUGH TERMINAL BLOCKS



Feed-through terminal blocks feed power, signal, and data is the classical requirement in electrical engineering and panel building. The insulating material, the connection system and the design of the terminal blocks are the differentiating features. A feed-through terminal block is suitable for joining and/or connecting one or more conductors.

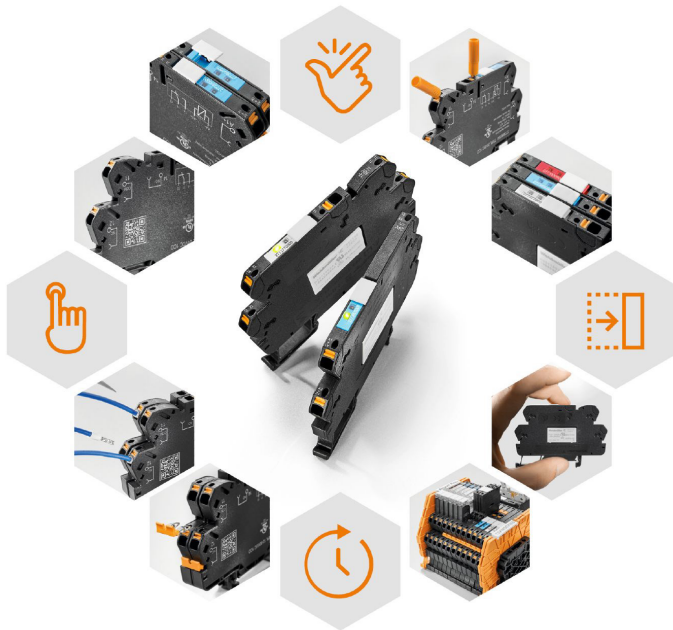
1608570000	ZDU 2.5/4AN	Reg. \$ 3.59 \$ 0.9
1608580000	ZDU 2.5/4AN BL	Reg. \$ 3.59 \$ 1.03
1636800000	ZDU 2.5/4AN OR	Reg. \$ 3.59 \$ 1.03
1683420000	ZDU 2.5/4AN RT	Reg. \$ 3.59 \$ 0.76
1683480000	ZDU 2.5/4AN WS	Reg. \$ 3.59 \$ 1.57
1683490000	ZDU 2.5/4AN SW	Reg. \$ 3.59 \$ 0.81



Call us now!

Please contact your Weidmuller sales representative or your local distributor to place an order...

FEATURED PRODUCTS



TERM SERIES-COMPACT

With the TERM SERIES-compact, Weidmüller has developed a new all-rounder for the Klippon® Relay portfolio. The advantages of the relay in the practical terminal block format are in its clever design. The new addition to the TERM SERIES family is not only variable in use, it's vibration-resistant thanks to its closed design. And with its housing width of only 6.4 mm, the relay can also fit into almost any control cabinet. The integrated PUSH IN connection technology also enables fast and uncomplicated wiring.



- ✓ Highly flexible
- ✓ Particularly maintenance-friendly
- ✓ Clearly identifiable
- ✓ Reliably identifiable
- ✓ Particularly space-saving
- ✓ Convenient data support
- ✓ Compatible with TERM SERIES products
- ✓ Optimized for fast wiring

U-REMOTE

Discover Weidmüller u-remote

our groundbreaking remote I/O concept with IP 20 that puts user benefits at the forefront:

- ✓ customized planning, accelerated installation, secure start-up, and zero downtime.
- ✓ Experience a remarkable enhancement in performance and productivity.
- ✓ Unlock space in your cabinets with u-remote, thanks to its sleek and compact modular design, requiring fewer power-feed modules. Our advanced u-remote technology offers effortless tool-free assembly, while the ingenious "sandwich" design and integrated web server expedite installation, both within the cabinet and the machine.
- ✓ Trust the status LEDs on each channel and u-remote module for dependable diagnostics and swift service.
- ✓ These innovative ideas, along with many others, elevate the availability of your machines and systems, ensuring seamless processes from planning to operation.

u-remote signifies "More Performance". Simplified.



☎ 1.800.268.4080

✉ orders_can@weidmueller.com

📍 10 Spy Court Markham,
Ontario L3R 5H6