

Q-Specials 2024

4th Quarter

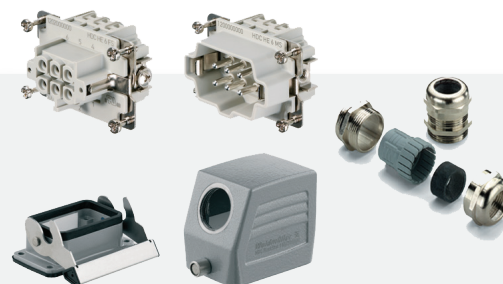


TERMSERIES Relays

1122850000	TRS 24-230VUC 1CO	Reg. \$35.32 \$26.00
1479770000	TRS 24-230VUC 1CO 16A	Reg. \$44.86 \$28.00
1123580000	TRS 24-230VUC 2CO	Reg. \$39.38 \$30.00

Modular relay modules from 6.4 mm width with extensive accessories, large selection of variants, and unlimited cross-connection possibilities. Relay modules from the TERMSERIES are now also available with a test button and offer a high level of practical benefit.

- 1 and 2 CO contacts, 1 NO contact
- Unique multi-voltage input from 24 to 230 V uc
- Input voltages from 5 V dc to 230 V uc with coloured marking: AC: red, DC: blue, UC: white
- Optional: Test button



RockStar® Heavy Duty Connectors Kits

1712460000	HDC-KIT-HE 06.100	Reg. \$52.15 \$40.00
1712510000	HDC-KIT-HE 10.110	Reg. \$66.95 \$49.00
1712520000	HDC-KIT-HE 16.120	Reg. \$69.85 \$52.00

HDC kits are standardized kits for assembling complete plug-in connectors. The HDC kits consist of a male insert, a female insert, a plug housing, a bulkhead housing and a cable gland. Weidmüller offers a wide range of different connector combinations with metric or PG cable entry threads and screw connection or PUSH IN connection.

Follow us:





Analog Signal Conditioners

2456820000 **ACT20P-BRIDGE-P** Reg. \$560.03
\$420.00

Measuring bridge converter
Input: Resistance measuring bridge
Output: 0(4)-20 mA, 0-10 V, Push-IN connection

2816700000 **ACT20P-PRO DCDC II-24-P** Reg. \$739.45
\$555.00

Analogue signal converter 24V DC power supply
Input : I/U universal, Output : I/U universal

- More precise and particularly functional
- Configuration via display, FDT/DTM software or DIP switches
- Encoded connector plugs prevent incorrect plugging



Unmanaged switches – BasicLine and ValueLine

1240840000 **IE-SW-BL05-5TX** Reg. \$165.51
\$120.00

1240900000 **IE-SW-BL08-8TX** Reg. \$245.27
\$180.00

1241030000 **IE-SW-VL16-14TX-2SC** Reg. \$1,464.15
\$950.00

Unmanaged switches are the simplest active network component. They do not need to be configured and are therefore very flexible. They use the basic standard protocols like auto-negotiation, auto-crossing, and flow-control and can automatically adjust to the different transmission speeds or connector wiring.

- Variations with ports
- Variations for Gigabit Ethernet
- Extensive approvals: CE, FCC, cULus,
- Class 1 Div. 2 / ATEX Zone 2, DNV-GL



Magnetic Circuit Breaker*

1278950000 **ETA 1180 01 1A** Reg. \$25.87
\$15.00

1278970000 **ETA 1180 01 2A** Reg. \$25.87
\$15.00

1278990000 **ETA 1180 01 3A** Reg. \$25.87
\$19.00

The Weidmuller thermal circuit breaker type 1180 reduces stoppages and downtime. In combination with a modular style terminal block the circuit breaker offers individual protection for every circuit.

- Push button resettable
- All standard amperages available from 0.1 A to 10.0 A
- cRUus (UL 1077) and CSA (C22.2 No. 235)



Fuse Terminal Block
1265990000
ZSI 2X6/4X2.5 Reg. \$42.08
\$25.00

*This Terminal block is specifically used for the 1180 Circuit breakers

For some applications, it is advantageous to protect the feed-through port with a separate fuse. Fuse terminal blocks consist of a lower terminal block with a fuse insert carrier. The fuses vary from swivelling fuse levers to plug-in fuse holders, screwable locks and flat plug-in fuses.

IE Switches Accessories



QUOTATION #Q4-2024:

Prices are valid from October 1st to December 31st, 2024, while supplies last. This offer is valid for customers and distributors in Canada only. All orders must be received by Weidmuller by this date and must reference quotation number Q4-2024.

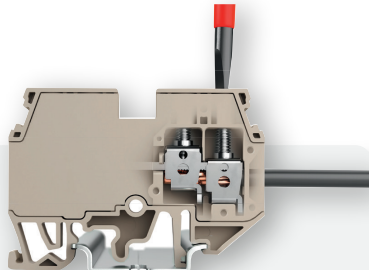


Ferrule Bags

9019200000	H4,0/20D GR (12awg)	Reg. \$23.58 \$11.00
9019170000	H2,5/19D BL (14awg)	Reg. \$20.06 \$9.00
0635100000	H1,5/16 R (16awg)	Reg. \$17.60 \$7.00
9025860000	H0,75/16 W (18awg)	Reg. \$9.08 \$5.00
9025870000	H0,5/16 OR (20awg)	Reg. \$7.92 \$4.00

The use of ferrules ensures users a consistent quality of their electrical connections in the long term.

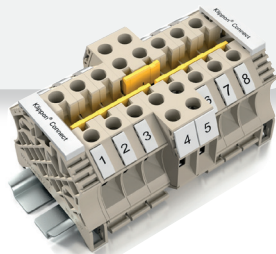
- Insertion funnel made of polypropylene
- Heat-resistant up to 105°C



Terminal block with DOUBLE screw connection

2868370000	WDUB 16	Reg. \$15.61 \$9.00
------------	----------------	-------------------------------

In some applications, such as current transformer circuits redundancy of the conductor connection within the terminal block is required. Our Klippon Connect WDUB 16 modular terminal block meets this requirement and offers a redundant (double) screw connection at each conductor entry. In this way, the increased safety requirements can be met for these applications.



Crimp tools

1444050000	PZ 6 ROTO L	Reg. \$328.53 \$225.00
2903690000	PZ 2.5 S	Reg. \$367.15 \$250.00

After stripping, a cable end can be crimped with appropriate contacts or ferrules. Crimping is a secure connection between conductor and contact. Crimping refers to the creation of a homogeneous, non-detachable connection between conductor and fastener. The connection is achieved exclusively by high-quality precision tools. The result is an electrically and mechanically safe and reliable connection.



UPGRADE YOUR PRINTING EXPERIENCE TODAY!



[More Information](#)

Contact your local Weidmüller distributor/sales representative, or call (800) 268-4080 to know more about this deal.

Weidmüller



Featured Products

Basic line series B switches

Unmanaged switches require no configuration and are nevertheless adaptable. They use basic standardized protocols, such as auto-negotiation, auto-crossing and flow control, allowing them to adapt automatically to widely varying transmission speeds or connector assignments. In addition, the switches are protocol transparent. Each port of a switch forms its own collision domain. All switches support the use of twisted pair cabling with RJ45 interface or fibre optic cable based on the interfaces specified in IEEE 802.3. Our unmanaged switches are the simple and economical standard start-up solution for the Industrial Ethernet. We offer different versions with different features. In addition to the unmanaged switches of the EcoLine, BasicLine and ValueLine, we can also offer you Power over Ethernet variants within all lines that can significantly reduce your wiring work. This means you can also operate Ethernet devices in areas that are difficult to access – without a separate power supply cable.



Features

- Support of real-time communication, e.g. in PROFINET networks through "Quality of Service" and "LLDP frame blocking" functionality - "PROFINET Conformance Class A"
- Large number of certifications to meet all mechanical and EMC requirements, ideal for applications such as offshore, process or mining
- Optimized DIN rail clip and push-in connector for quick and easy installation
- Covers the most common port combinations with RJ45 and SFP ports for flexible use
- AC/DC power supply input
- Network availability is greatly increased thanks to "Broadcast Storm Protection"
- Energy-efficient Ethernet and plastic-free packaging

SNAP IN Terminal Blocks

Now available in a new 4mm² version and a 2.5mm² double-level block, both CSA Approved!



QUICK



SIMPLE

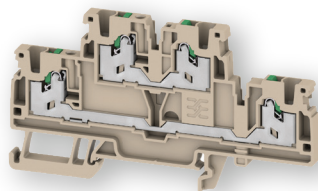


SAFE

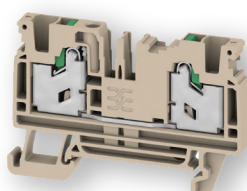


READY-TO-ROBOT!

Experience the future of control cabinet wiring with Klippon® Connect terminal blocks featuring innovative SNAP IN technology. Designed for intuitive and effortless handling, these blocks minimize cable preparation time, ensuring a faster and more efficient installation process. In the world of electrical engineering and control cabinet construction, the seamless transmission of energy, signals, and data is paramount. Key factors include the quality of the insulating material, the connection technology, and the design of the terminal blocks. Our feed-through terminal blocks are engineered to merge and connect multiple conductors, offering one or more connection levels that can either share the same potential or remain isolated from each other.



S2T 2.5 – 2.5mm² double level block



SXC 4 – 4mm² version

POWERCRIMPER VARIO

Easy crimping for connectors and ferrules

Safe, Flexible, Electrical.



The POWERCRIMPER VARIO is offering flexible options of usage thanks to its purely electrical drive. Different inserts e.g. for insulated connectors up to 6 mm² (AWG 10) or wire end ferrules 6 to 16 mm² (AWG 10-6) are enabling force-gentle crimping operations. With the use of hand tools and an increasing number of crimps, these connections are among the more demanding applications.

- Purely electrical operation with high flexibility
- High process-safety thanks to suitable inserts for various wire end treatments
- Intuitive handling and finger safety due to protective shield
- High serviceability with LED display
- Compact dimensions and robust design

Weidmüller



www.weidmuller.ca



10 Spy Court Markham, Ontario L3R 5H6



TOLL FREE: 1.800.268.4080



orders_can@weidmueller.com